

N

INDUSTRIAL PRODUCTS

INFRATROL



Orbitform Group

Service Engineering Inc.

***NELSON
ENGINEERED
PRODUCTS***

A Division of Nelson Sales Corp.

INFRATROL INFRATROL

Infratrol has manufactured industrial ovens, industrial powder coating and paint systems, and industrial parts washers since 1956.

The company's continuous industrial ovens combine thermal processing with an engineered-to-order material handling system. Oven types include:



- Drying
- Curing
- Pre-heat
- Aging
- Annealing
- Humidity
- Infrared

NEW! EcoFlex Powder Coating System

- No hazardous air pollutants (HAPs)
- No halogenated hydrocarbons (HHCs)
- No chlorinated fluorinated compounds (CFCs)
- No SO_x or NO_x
- No ozone depleting substances (ODSs)

Orbitform Group ORBITFORM

Orbitform delivers orbital solutions through its orbital riveting and forming machines. The company manufactures precision forming and fastening for a wide range of industries and applications. Prototype engineering services for assembly of parts and specialized forming and fastening are also available.

Orbitform provides modular power heads, bench machines and multi-function orbital machines that offer many benefits including:

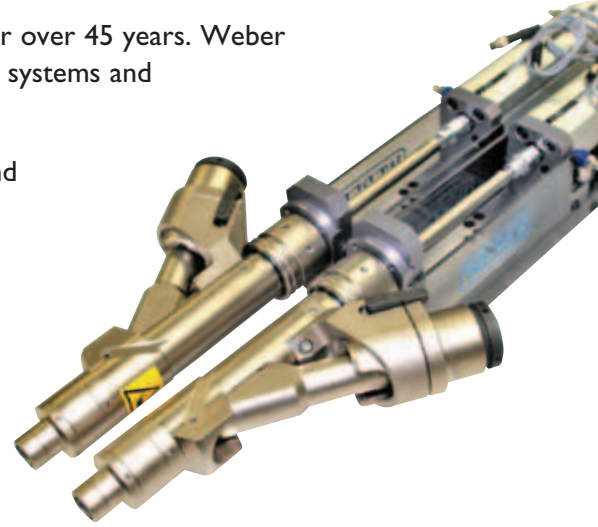
- Low force-to-material upset ratio
- Quiet and safe processes
- Precise control and consistency
- Gentle to parts handling
- Various attractive finished looks
- A wide range of material selection



Weber screw driving systems has manufactured precision fastening systems for over 45 years. Weber manufactures modular screw driving spindles, hand-held systems, pin insertion systems and lean cells.

Each system is individually tested and approved prior to leaving the factory, and must pass Weber's stringent requirements for quality and precise operation. This unmatched attention to detail guarantees your system will arrive ready to use, out of the box. No excuses!

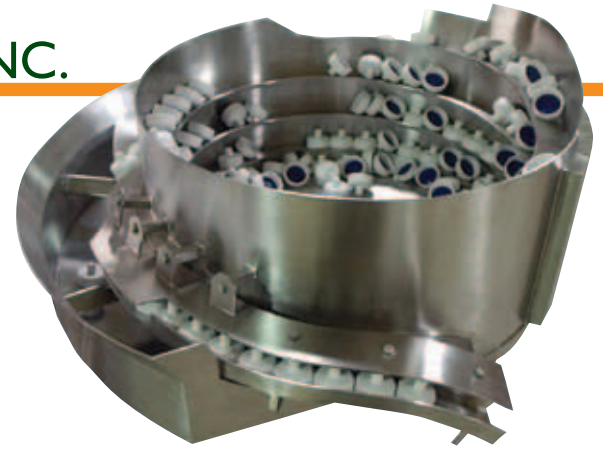
When start-up assistance, personnel training and factory field service are required, Weber has a trained staff of service Technicians and Customer support staff to assist you in the Weber experience.



Service Engineering Inc. **SERVICE ENGINEERING INC.**

Service Engineering designs and builds parts feeding systems, both vibratory and centrifugal. The company is one of the world leaders having built nearly 50,000 parts feeding systems.

The company offers high output vibratory systems, gentle part handling, multiple line and medical/pharmaceutical parts feeding applications. It also has a line of standard and scallop centrifugal feeders providing high output parts feeding. Rates are as high as 1500 parts per minute.

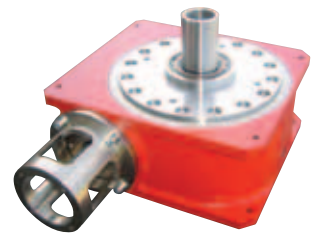


CAM DRIVEN SYSTEMS

Cam Driven Systems specializes in motion control devices and drives for machine integrators and automation builders. CDS manufactures precision link conveyor systems, assembly machine chassis sub-systems – rotary and in-line – pick and place part handlers and open cent ring rotary positioners. The company offers unique emphasis on clean room compatible products.

Product offerings include:

- Indexers with plate cams
- Rotary Indexing Tables
- Roller Gear Index Drives
- TL Series Precision Link Conveyors
- TL Series Precision Link Conveyors
- MHP-Rotary Part Handlers and LHP-Linear Part Handlers



Widest Range of Cam Motion Control Drives Available from One Source

*NELSON
ENGINEERED
PRODUCTS*

A Division of Nelson Sales Corp.

TOLL-FREE 800-882-8744 | PHONE 262-971-1717 | FAX 262-971-1710 | WEB www.nelsonsales.com

S84 WI9234 ENTERPRISE DRIVE P.O. BOX 460 MUSKEGO, WI 53150